

## Barbiturates from Whole Blood by Strata X (60mg/3cc) (TIC)

Column: Zebtron<sup>™</sup> ZB-Drug-1, GC Cap. Column 10 m x 0.18 mm x 0.18  $\mu$ m, Ea

Phase: Proprietary Drug Phase

Dimensions: 10 meters x 0,18 mm x 0,18  $\mu$ m

Order No: 7CD-G023-08

Oven Profile: 145 °C to 300 °C @ 25 °C/min

Carrier Gas: Constant Flow Helium, 0,6 mL/min

Injection: Split 10:1 1  $\mu$ L @ 280°C

Detection: Mass Selective (MSD) (320°C)

Analyst Note: Analytes are 300ng/mL in urine derivatized with TMPAH

Sim ions:

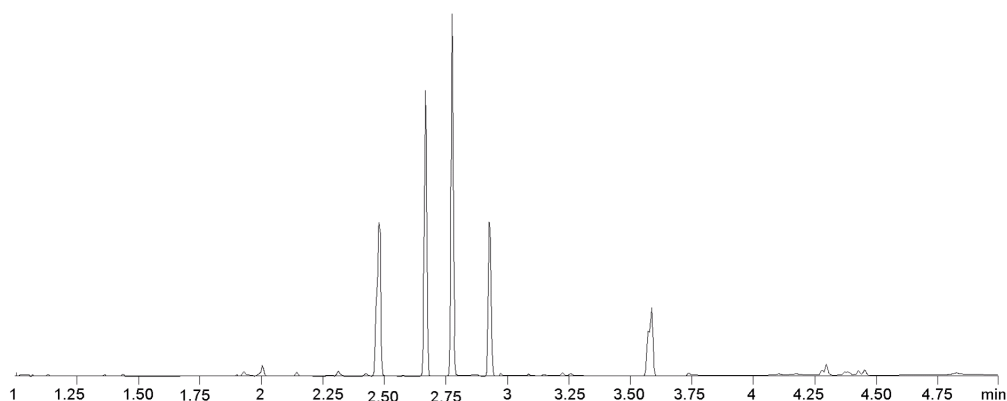
(Quant ion\*) D5-Butalbital (\*201,184,214): Butalbital (\*196,181,138): Amobarbital (\*169,184,225): Pentobarbital (\*169,184,225): Secobarbital (\*196,181,138): D5-Phenobarbital (\*233,151,122): Phenobarbital (\*232,146,117)



Products used in this application:



23896



## ANALYTES:

- 1 Butalbital-d5
- 2 Butalbital
- 3 Amobarbital
- 4 Pentobarbital
- 5 Secobarbital
- 6 Phenobarbital-d5
- 7 Phenobarbital



# Sample Preparation Details

for GC Application ID No.: 23896

## Barbiturates from Whole Blood by Strata X (60mg/3cc) (TIC)

### PRODUCT DESCRIPTION:

Strata<sup>TM</sup>-X 33  $\mu$ m Polymeric Reversed Phase, 60 mg / 3 mL, Tubes , 50/Pk

Order No.: 8B-S100-UBJ

### SOLID PHASE EXTRACTION (SPE) PROCEDURE:

Note: The solvent volumes shown below are for a 60 mg bed mass.

The solvent volumes will need to be adjusted for a smaller or larger bed mass.

Condition:

Load:

0.5mL of Whole Blood + 1.5mL of 20mM potassium phosphate pH 2.7

Wash:

Dry:

Dry column (5 minutes at > 10 inches Hg)

Elute:

### Final Prep and Analysis:

Reconstitute with 100uL Acetonitrile and 50uL of Thermo Scientific MethElute Reagent (TS49301)

Inject: 1  $\mu$ L on HPLC Mass Selective (MSD) @ \_ (320°C)

ANALYTES:	Spiked Conc. (ng/mL)	Log P	pKa	% Rec	% RSC (n=0)
1 Butalbital-d5	0				
2 Butalbital	0				
3 Amobarbital	0				
4 Pentobarbital	0				
5 Secobarbital	0				
6 Phenobarbital-d5	0				
7 Phenobarbital	0				

Note: *This method is designed as a convenient starting point for further investigation and can be tailored to meet your extraction goals.  
Call your local Phenomenex Representative for assistance in method development and optimization techniques.*

©2018 Phenomenex Inc. All rights reserved.

For more information contact your Phenomenex Representative at [international@phenomenex.com](mailto:international@phenomenex.com).



Phenomenex products are available worldwide.

[www.phenomenex.com](http://www.phenomenex.com)

[international@phenomenex.com](mailto:international@phenomenex.com)